

INSTALLATION INSTRUCTION. Please read this leaflet thoroughly **BEFORE** installation.

CHECK ALL PANELS FOR BATCH, SHADING OR ANY DEFECTS PRIOR TO INSTALLATION

DRIWALL[®]

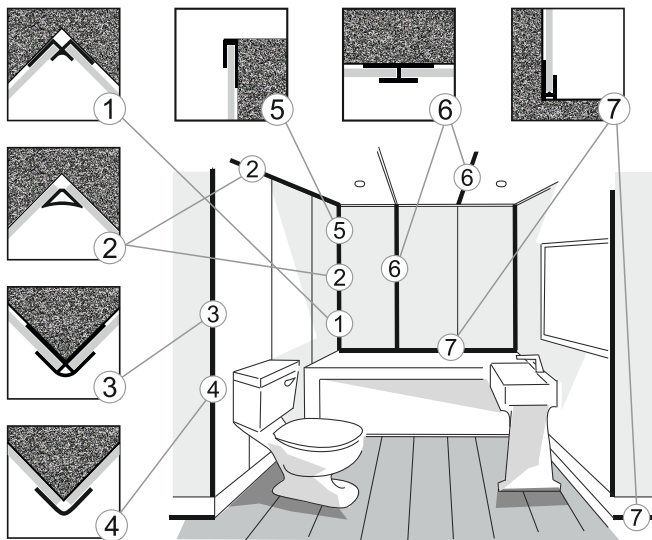


1000mm

**DECORATIVE PVC
SHOWER & WALL PANELS**

1000mm

7mm x 1000mm x 2400mm WIDEPANELS (2 panels per box; 4.8sqm)



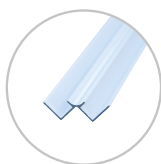
*"Grout is Out!"[™]
"Easy to Fit!"[™]*



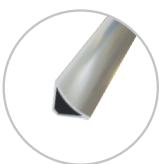
1. Internal
2. Scotia
3. External
4. L-shape
5. End U
6. H Join
7. Base Seal

TO CHECK

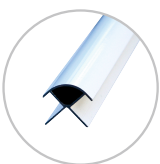
Before and during installation for visible defects. As is general practice installed panels and extrusions are assumed to be accepted.



Internal Corner



Scotia



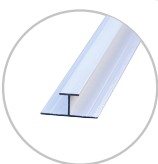
External Corner



L-Shape



End U



H Join



Base Seal



Quadrant

USE BASE SEAL EXTRUSIONS FOR ALL INSTALLATIONS

PVC PANEL MAINTENANCE

DO NOT EXPOSE TO DIRECT SUNLIGHT, OR TEMPERATURES IN EXCESS OF 60C.

The hardwearing surface of the panelling can be hygienically cleaned with shower-panel Spray Cleaner which is a mild non-abrasive cleaner with an anti-bacterial agent.

Abrasive cleaners and bleaches must NOT be used on PVC panels. When fitting lighting if in doubt consult the lighting manufacturer.

Class 1 Fire rated. SUITABLE FOR COMMERCIAL AND DOMESTIC USE.

CHECK ALL PANELS FOR BATCH, SHADING OR ANY DEFECTS PRIOR TO INSTALLATION

DRIWALL®

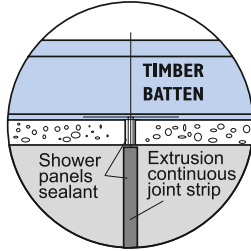


1000mm

DECORATIVE PVC SHOWER & WALL PANELS

1000mm

INSTALLATION INSTRUCTION. Please read this leaflet thoroughly **BEFORE** installation.



← A. SQUARE EDGE FIXING

"Grout is Out!" "Easy to Fit!"

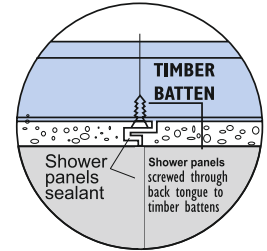
RECOMMENDED FOR SHOWER PANELS.

First trim off the tongues on the sides of each panel. Panels are easily cut on-site. The edges being covered by shower-panel extrusions. This will facilitate for faster installation. Panels can be joined together in continuous runs or stacked with decorative H-join extrusions. Panel size: 7mm x 1000mm x 2400mm

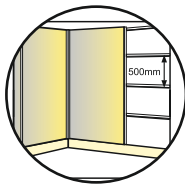
B. TONGUE & GROOVE FIXING →

RECOMMENDED FOR CONTINUOUS PANEL RUNS.

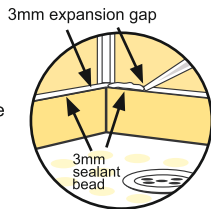
Vertical edges are tongue and grooved giving the finished panelling a smooth continuous, easily maintained surface. Each panel has a symmetrical tongue and grooved vertical edge to give a 5mm join overlap. When sealed with shower-panel sealant, a waterproof joint is assured.



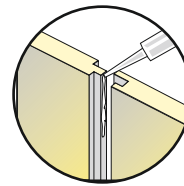
FIXING PANELLING IN WET AREAS



TIMBER BATTENS
45mm x 21mm battens are recommended to be fitted at a maximum distance of 500mm apart.



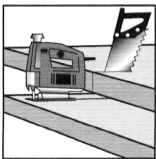
PANEL FIXING TO BASE
We recommend to use a Base Seal and fill with sealant. Fit panels 3mm above bath, shower tray or floor. Seal expansion gap with shower-panel sealant.



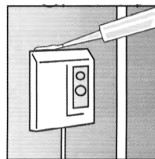
PANEL SEALING IN WET AREAS
Seal all square edge or tongue and groove joints with shower-panel sealant. Always seal inside each profile prior to inserting.

CLEAN EXCESS SEALANT WITH A CLEAN DAMP CLOTH IMMEDIATELY

PANEL PREPARATION



CUTTING PANELS:
Using a handsaw cut panels with decorative face upwards. When using an electric saw cut panels with decorative face downwards.



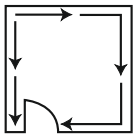
PIPES AND ACCESSORIES:
Leave a 3-4mm clearance around all pipes and accessories and seal with a bead of shower-panel sealant. If a collar is to be fitted, first seal with shower-panel sealant.

TO CHECK

Before and during installation for visible defects. As is general practice installed panels and extrusions are assumed to be accepted.

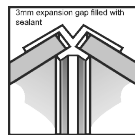
THE SIDES OF PANELS SHOULD BE TRIMMED TO FORM A TIGHT FIT

TONGUE & GROOVE PANEL INSTALLATION

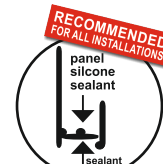


WHERE TO START - Start at the corner furthest from the door, panel in both directions around the room. The last panel is fitted above the doorway, placed in position. All panels must be correctly aligned and plumb, allowing for 3mm expansion in corners within the extrusions. Fix panels to battens using shower-panel adhesive. Seal all panel joints and extrusions using shower-panel sealant.

FIRST FIT THE BASE SEAL EXTRUSIONS

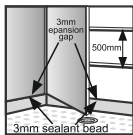


BEGIN PANELLING - Fix an internal corner profile in position ensuring that it is plumb. Apply shower-panel sealant to the recess of the profile. Apply shower-panel adhesive to the battens. Insert the first panel after cutting to size. Then continue to panel away from the corner in both directions, fixing panels to battens with shower-panel adhesive, and sealing extrusions with shower-panel sealant. Allow for 3-4mm expansion gaps, filled with shower-panel sealant.

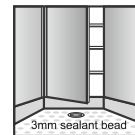


CONTINUE PANELLING - Continue panelling around the room fixing each panel to the battens using shower-panel adhesive. Seal all joints using shower-panel sealant. Use internal and external corner profiles, sealing with shower-panel sealant, where appropriate. **Retro-fit L-shape & Scotia extrusions can be used.**

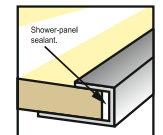
SHOWER PANEL INSTALLATION



TWO PANEL SHOWER ENCLOSURE - First fit THE BASE SEAL extrusions to the tray. The shower tray must be fitted hard against or cut into the wall. Cut the panels and profiles to size. First fix a shower-panel internal profile in position against the battens ensuring that it is plumb. Apply a generous bead of our shower-panel sealant into profile and insert panels. Fix panels to battens using our shower-panel adhesive. Allow for 3-4mm expansion gaps, filled with shower-panel sealant.



THREE PANEL SHOWER ENCLOSURE - Two internal profiles are required. First panel is fitted as for the two panel shower enclosure. Put an internal corner profile onto the edge of second panel, and apply shower-panel adhesive to the battens. Insert other edge into profile already attached to the wall, and swing second panel into place forming back of enclosure and drop into THE BASE SEAL extrusions. Fix profile to wall, insert third panel and glue to wall. Ensure a generous bead of shower-panel adhesive is applied into all profiles. Allow for 3-4mm expansion gaps, filled with shower-panel sealant.



FINISHING TOUCHES - END U-TRIM - Finish outer panel edges with End U-Trim applying a generous bead of shower-panel sealant into the End U-Trim. Seal all gaps around the tray with shower-panel sealant prior to installing the shower door or side panel.

USE BASE SEAL EXTRUSIONS FOR ALL INSTALLATIONS